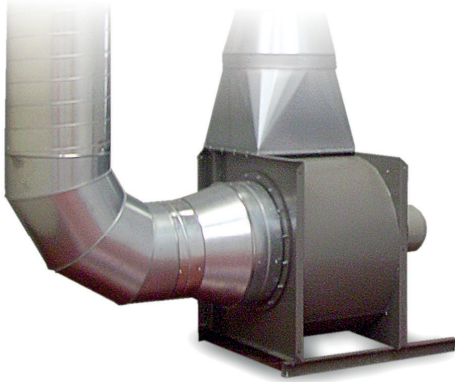


# Central fan

Art. No.: 921 0510 170



## Applications

- For extraction tables, extraction hoods and extraction arms
- High levels of smoke and particles
- Non-stop operation

## Benefits

- Low investment costs because extraction takes place without air filtration

## Properties

- Galvanised steel sheet construction
- Different performance classes

## Technical Data

| Basic data                 |                               |
|----------------------------|-------------------------------|
| Max. fan performance       | 7000 m <sup>3</sup> /h        |
| Extraction capacity min.   | 4000 m <sup>3</sup> /h        |
| Extraction capacity (max.) | 7000 m <sup>3</sup> /h        |
| Extraction capacity        | 4000 - 7000 m <sup>3</sup> /h |
| Vacuum min.                | 1100 Pa                       |
| Working pressure in PA     | 1920 Pa                       |
| Vacuum                     | 1100-1920 Pa                  |
| Weight                     | 70,0 kg kg                    |
| Motor power                | 4,0 kW                        |
| Power supply               | 3 x 400 V / 50 Hz             |
| Rated current              | 8.1 A                         |
| Additional information     |                               |
| Inlet diam.                | Ø 400 mm                      |
| Outlet opening             | 507 x 256 mm                  |
| Transition piece           | Ø 450 mm                      |