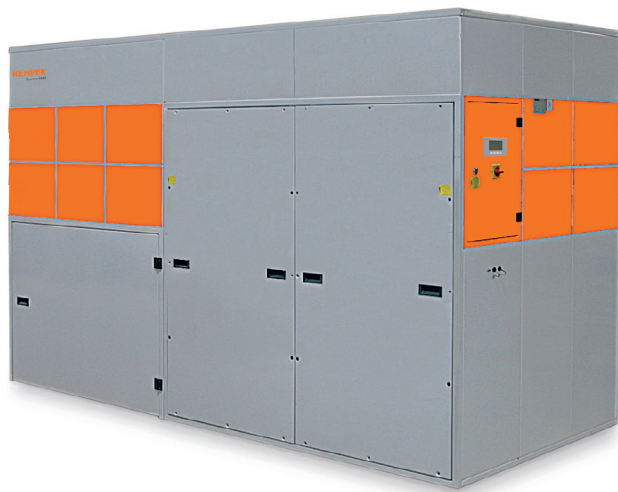


WeldFil HV

Art. No.: 91 0400 040



Applications

- High levels of smoke and dust
- Welding torch extraction, nozzles and high vacuum exhaust arms
- Can be installed outdoors
- Large welding shops or training centres

Benefits

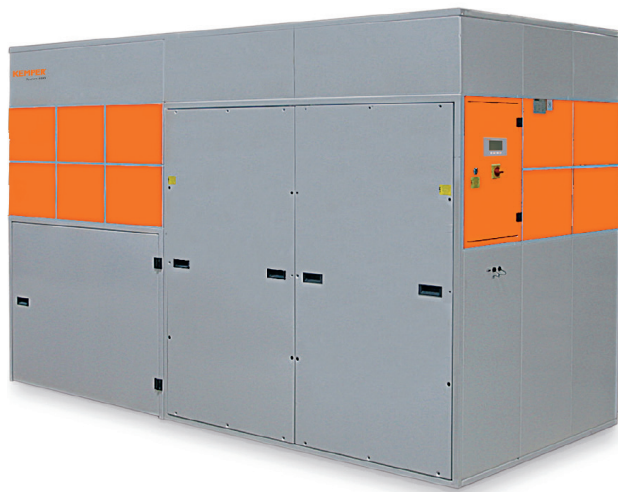
- Contamination-free dust collection due to compressed air fixation of dust collection containers
- Uninterrupted continuous operation due to automatic differential pressure-controlled filter cleaning
- Little noise emission due to a low noise level
- Expandable due to simple modular construction
- Considerable energy cost savings by using the automatic extraction volume control
- Convenient operation due to intelligent control via touch screen with diagnostic system
- Flexible integration of the control system into third-party systems such as cutting equipment due to potential-free contacts
- Best health protection for employees by use of KemTex® ePTFE cartridges with surface filtration

Properties

- Automatic filter cleaning, pressure-controlled
- Control via touch screen
- KemTex® ePTFE filter cartridges
- Dust collection container with pneumatic lifting device
- Modular design

Accessories

- Automatic dust disposal - DustEvac
- Automatic suction power regulation
- External On/Off
- Spark separator – SparkTrap
- Weatherproof housing for outdoor installation



Technical Data

Filter

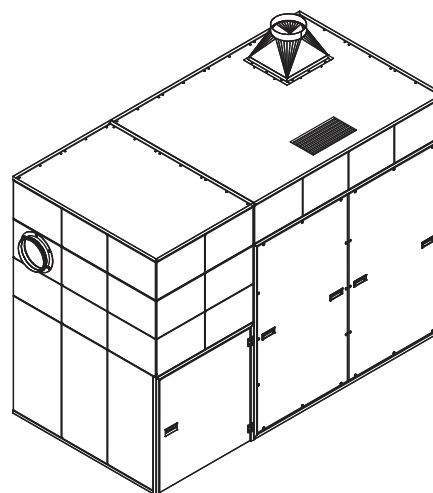
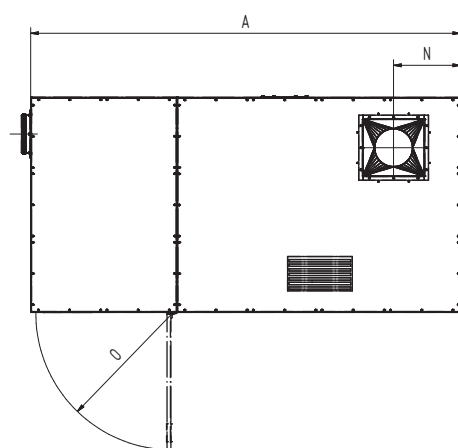
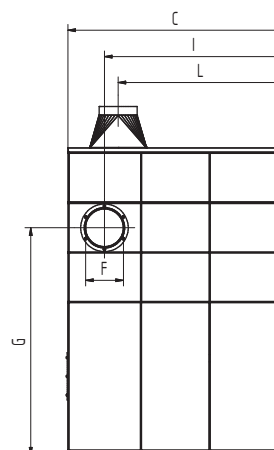
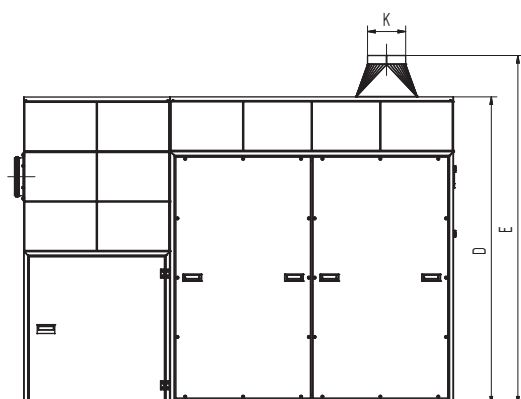
Filter stages	1
Filter method	Cleanable filter
Filter cleaning method	Jet-pulse
Number filter elements	4
Filter surface total	40 m ²
Filter material	PTFE-membrane
Filter efficiency	> 99.99 %
Dust classification	M

Basic data

Extraction capacity min.	1000 m ³ /h
Extraction capacity (max.)	1800 m ³ /h
Extraction capacity	1000 - 1800 m ³ /h
Vacuum min.	13500 Pa
Working pressure in PA	16000 Pa
Vacuum	13500-16000 Pa
Dimensions (w x h x t)	2826 x 1413 x 2015 mm
Weight	1150 kg
Motor power	30 kW
Power supply	3 x 400 V / 50 Hz
Rated current	53 A
Noise level	65 dB(A)

Additional information

Fan type	Radial fan, belt driven
Compressed air supply	5 - 6 bar
Air outlet	250 mm
Air intake	250 mm



Technical Data

Dimensions

A	2826 mm
C	1413 mm
D	2015 mm
E	2292 mm
F	250 mm
G	1498 mm
I	1173 mm
K	250 mm
L	1083 mm
N	440 mm
O	896 mm

The shown transition pieces are optional