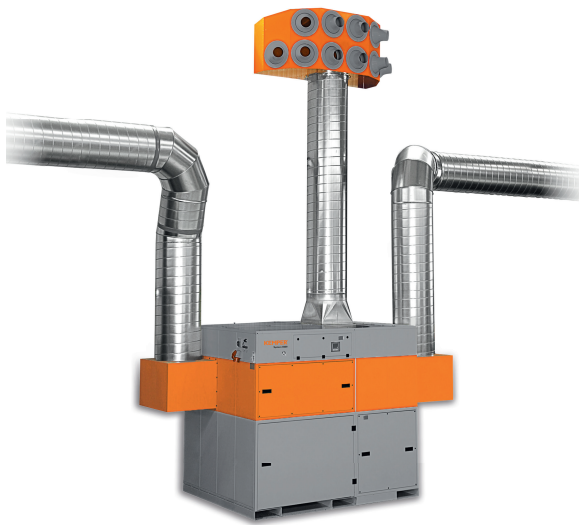


KemJet

Art. No.: 99 880 0414



Technical Data

Filter	
Filter surface total	120 m ²
Basic data	
Extraction capacity	13000 m ³ /h
Height	Variable
Measurements filter unit	2.375 x 1.864 x 2.110 mm mm
Measurements blow-out unit	1.905 x 990 x 860 mm mm
Gross weight extraction unit	1230 kg
Total weight	1450 kg
Motor power	7.5 kW
Power supply	3 x 400 V / 50 Hz
Rated current	13.8 A
Noise level	65 dB(A)
Additional information	
Fan type	Radial fan, belt driven
Nozzles	10 x 250 mm
Length of extraction duct	2 x 9.000 mm
Wall mounting (set)	99 8103 467
Supports (set)	99 8103 470
Air nozzles, range	approx. 45 m

Applications

- Workshops where local exhaust ventilation is not possible
- To complement local exhaust ventilation systems
- Environments with changing sources of smoke and dust
- For large work pieces or where work positions are well separated

Benefits

- Cleaned air distribution adaptable to the location of the plant as high-performance nozzles are adjustable by 30 degrees
- Contamination-free dust collection due to compressed air fixation of dust collection containers
- Uninterrupted continuous operation due to automatic differential pressure-controlled filter cleaning
- Various outlet heights possible by using different pipe lengths
- Little noise emission due to a low noise level
- Heating costs minimised by air recirculation
- Quick and simple to set up
- Convenient operation due to intelligent control via touch screen with diagnostic system

Properties

- Automatic filter cleaning, pressure-controlled
- KemTex® ePTFE filter cartridges
- Dust collection container with pneumatic lifting device
- High-performance nozzles adjustable by 30 degrees

Accessories

- Automatic dust disposal - DustEvac
- External On/Off
- AirWatch
- Stanchion support
- Wall-mounting kit

